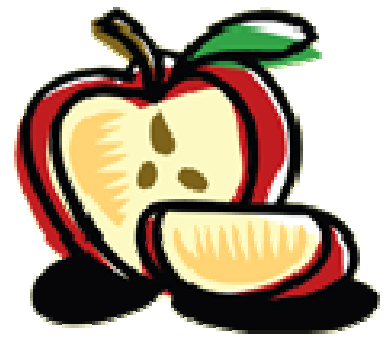


CALVARY
CHRISTIAN
ACADEMY



Building on Excellence

Welcome

Welcome to Calvary Christian Academy ...

where knowledge and faith become one.

At CCA we believe that education is a journey that involves development on all levels: spiritual, intellectual, moral, social, cultural and physical.

The result is a student who has the knowledge and understanding to be successful, and the foundation in the Christian faith to live a virtuous and responsible life. The core of the student experience is exceptional teaching. The caring and committed staff nurture the young people entrusted to their care. They strive to develop in each child their God-given potential.



With God's in 1997, Calvary Christian Academy was born out of the vision of a few founding families.

As we strive to give students the best possible we are about to embark on the most ambitious campaign of the school's proud history.

Our vision includes creative facilities staffed by inspirational teachers, small class sizes, and a rigorous and bold academic curriculum that takes us to the next level as leaders in education.

In keeping with our vision, our renewed campus will:

- ♦ *Inspire students and teachers to pursue excellence*
- ♦ *Lead the way in spiritual growth*



Building on Excellence



Principal's Message

When I think about God's goodness to us in the past, I am filled with gratitude. When I think about what God wants to do for us and through us in the future, I am filled with anticipation. The Bible tells us, "One generation shall praise thy works to another." We have a Christian school that is impacting young lives today because of those who went before us. If we are to influence this generation for Christ and accommodate future generations, the success of this giving campaign is a necessity.

As we approach this strategic time, we are positioned as a Christian school with a rich history of superior academic excellence where our graduates have gone on to excel academically, socially, artistically and athletically. Our enduring strength is our unmatched student experience. In terms of population, location, visibility, property, and facilities, God has given us an absolutely incredible opportunity.

"He has indeed set before us a great and open door" (1 Corinthians 16:9).

The program has a great title, "Building on Excellence." This title challenges us to catch the vision of how the school can impact the lives of boys and girls in the future. It is more than a building. It is a vision of shaping lives. It is training leaders who will make a difference for God in the future of our community, our nation, and our world! It challenges us to expand our concept of all that CCA could be.

"Building on Excellence" is our willingness to be challenged as ordinary people and let God, through us, do extraordinary things. He has chosen to allow us the privilege and the responsibility of being busy with the business of preparing children to be Christian leaders who choose character before career, wisdom beyond scholarship, service before self, and participation as a way of life. Our school is faced with challenges, such as growth for the future, and wise stewardship. A very tangible way to make possible the growth and maturity of our school is our heart of giving. I am going to ask you to join me, as well as our school faculty, and the entire CCA family in giving sacrificially over the next five years to see this vision fulfilled. This will be a time of spiritual growth for us all.

I praise God for the privilege of serving here at CCA. I am praying the Lord's blessings upon you, as He guides and directs in this opportunity to bless thousands for eternity!

God Bless,

Tom Bourne

Principal



Building on Excellence

Impacting Lives

For years, dedicated and generous members of the Calvary Christian Academy (CCA) family have fulfilled a promise to advance this remarkable institution to where it is today.

Today, CCA students thrive in classrooms, on playing fields, in theatre and music. Today, alumni reflect that their very character, their qualities of integrity, honour, and trust, were nurtured and honed during their years at CCA. Today, we strive to deliver these indelible standards in all aspects of school life, so that tomorrow's alumni, too, have the strength and comfort that such a firm foundation provides. It is with great confidence that we launch "Building on Excellence", a campaign that aspires to strengthen and secure elements that are at the very core of the CCA experience. This Campaign follows the success of "Building the Future".

Since 1997, God has been clearly at work on the campus of Calvary Christian Academy, blessing this school with growth and vitality in greater measure with each passing year. In response to God's faithfulness and His affirmation of our mission, and with the identified need to redevelop the school, we believe the time is now to build and redevelop. We have made no substantial improvements to our campus since moving to the current location in 2001. However, our school's long-term needs require a comprehensive approach to building and growth.

Over the next five years, we anticipate significantly increasing our school enrolment via the addition of new programs. We are planning for growth in our student population that will have an impact on our continued ability to provide small class sizes and individual attention while emphasizing Christian education upon which CCA has built its reputation.

We must act now to put the resources in place to realize this vision.

God is leading us into the future in order to touch the lives of students, family, our community and beyond.



"Give and it will be given to you. A good measure pressed down, shaken together and running over, will be poured into your lap. For with the measure you use, it will be measured to you".

Luke 6:38



Building on Excellence

Realizing the Vision with....

Sustained Planning

◆ Phase One - Complete Fall 2013

During this phase, a dedicated preschool area will be constructed that will accommodate 16 children five days per week. CCA has seen the part time program flourish over the past few years with a wait list for enrolment. The square footage involved in the new addition will be approximately 2,400 sq. ft.

In addition, renovations to the existing school during this phase will include: a dedicated staff room and staff bathroom, dedicated storage room and new change rooms for boys and girls adjacent to the gymnasium.

Projected Building Cost including equipment —\$250,000

Bursary Fund—\$25, 000

◆ Phase Two - 2 Years (2015)

This Capital Campaign “Building on Excellence” is planned to raise over \$1.5 million over 5 years to pay off the property and provide financing to begin the construction of the new school addition. This stage provides classrooms for our grades 7 and 8. These students are currently housed in the 3 portables. These new classrooms will be built to provide enough square footage with teaching facilities that will serve our elementary students for many years to come and keep CCA appealing to the new residents of the surrounding community. This proposed addition will have custom-built classrooms. These efficient, ergonomic and appealing classrooms will be designed to support CCA’s goal of inspiring students to excellence. This phase also envisions the introduction of new washrooms, a dedicated music room (which will meet standards for noise levels, sound insulation, and room acoustics) and two study resource rooms to enhance student learning.

Furthermore, this addition will allow CCA to use the three existing portables to begin a High School program.

The building addition, at this phase, will be approximately 4500 square feet.

Projected Cost including equipment —\$400,000

Bursary Fund—\$40,000

◆ Phase Three - 3-4 Years (2016-2017)

This phase of fundraising within the capital campaign will contribute to the financing of the construction in order to complete the facility and reduce the overall debt. This phase completes the building process. The complete campus will then be approximately 24, 600 square feet.

The plan envisions an athletic track for the school, along with a baseball diamond. New construction will see the building envelope increase via the addition of a multipurpose room to accommodate theatre and musical functions as well as seating for a 200-seat chapel and removal of the stage area so as to increase the overall dimensions of the gym. Finally, the new construction will see the creation of permanent classrooms to accommodate a High School.

Projected Cost—\$500, 000

Original Debt—\$ 250,000

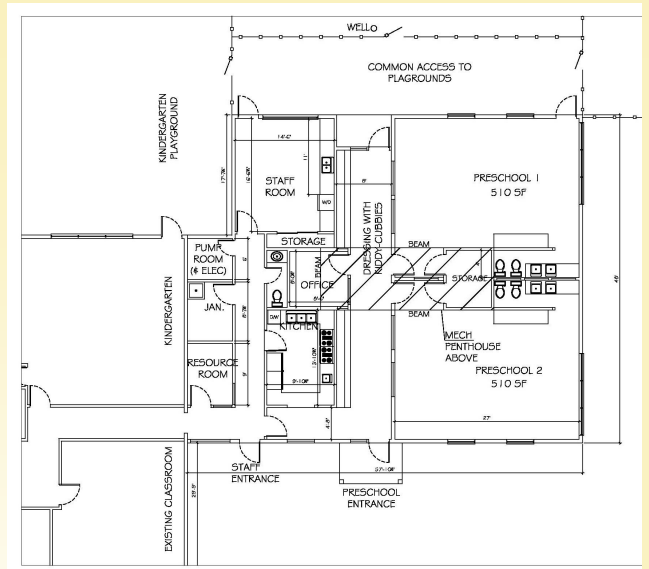


Building on Excellence

Realizing....
Realizing....



Phase 2



Phase 1

the vision
the vision



Phase 3



Building on Excellence



Board Chair Message

As we contemplate the future of the school and the plan for a renovated and expanded facility, we often look at what we may or may not gain from it. I would prefer that we think of the new school as a legacy.

Those families in the school today will be providing through the facility a legacy of God's faithfulness to future generations of young people. When you look at the physical structure you will recall God's provision. It will be a reminder of his blessing and faithfulness in establishing the school. We need to think of the new facility as a historical marker to remind us of God's provision for this school. We need to remember and recall all that God has done. We ought not to forget what the Lord has accomplished for CCA. As years pass it will be easy to forget about God's faithfulness but the school will be a perpetual physical reminder to all present and future generations to help us remain focused on God's mercy, grace and practical provision.

I am very excited about the Building on Excellence campaign and am confident that the vision will be achieved. I know that I can count on you. Join the spirit of the cause. CCA needs your help. By making a financial contribution, you will not only be helping our school grow and flourish, but you will also be helping future generations of students become responsible and successful contributors to our community.

In Christ,

David Joynt

Board Chair, Calvary Christian Academy

"He did this so that all peoples of the earth might know that the hand of the Lord is powerful and so that you might always fear the Lord your God."

(Joshua 4:24).



Building on Excellence

Facts and Information

The money raised will go to the following:

- **\$250,000** debt – it is important to remove the burden of debt, allowing the school to focus its resources on education
- **\$1,250,000** new building addition/renovations

CCA is:

A registered private school (JK to 8) with the Ministry of Education

A licensed Preschool program

A non-profit registered charity

Committed to small class sizes in a multi-denominational Christian environment

We recognize that:

Children have different learning styles and learn at different rates

Each child deserves to be academically challenged at his/her own level



We value:
We value:

Attitude over aptitude

Effort over ability

Character over talent



Building on Excellence

Facts and Information

Our Success

CCA students score remarkably well on the Canadian Achievement Test (a standardized test used by both public and private schools across Canada): In the fall of 2011, we assessed our graduating grade 8 class.

In all 6 educational measures (reading, vocabulary, writing conventions, spelling, mathematics, computation and estimation) our class mean grade equivalent was 1.9 grade levels above.

CCA students consistently rank very high in public speaking, art, and writing Competitions.

We aim to:

Contribute to the development of responsible children

Challenge our children to be leaders

Inspire them to reach their God given potential

We believe:

In not only teaching but inspiring the whole child to reach their potential

That children need to develop cognitively, socially, physically, emotionally and spiritually

In teachers, parents and volunteers all working together for each child's success

Parent Testimonial

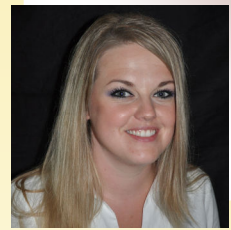
"Ten years ago we were prayerfully considering where to send our son for his education. Happily, we found Calvary Christian Academy and have never looked back! Our son is now in grade eight and our daughter is in grade six. We all love this school! As parents, we know that the school is like an extension of our home. What we teach in our home is being reinforced at school. Our children are being nurtured in their faith in a safe and loving environment. Our children love to come to school! Imagine....even a thirteen year old boy! CCA is outstanding in academics, the arts and athletics. But aside from all this, our kids quite simply feel accepted and loved by the staff. To us, this is so valuable as we look to equip our children for the upcoming teen years."

Jennifer and Richard Keating



Building on Excellence

Your Part.....



Today, it is with great pleasure and excitement that we announce the beginning of the public phase of the Building on Excellence Capital Campaign. Much work lies ahead, but we are certain that we will not only achieve our monetary goals, but also the visions they represent. The Lord has truly blessed Calvary Christian Academy. It is a wonderful school with generous and God-fearing staff. Over the years we have seen many bright and diligent children being guided and shaped by this school. In an effort to continue this tradition and expand on it for the benefit of our children, we are being called to action.

Our quest for excellence relies on the generous contributions from devoted alumni, families, community supporters of CCA and friends. Calvary Christian Academy cannot rely on tuition fees alone to provide the calibre of facilities, resources and quality education for the population seeking a Christian school. The need for all of us to be involved becomes evident when we begin to think about what it will take to successfully achieve our goal. This project is far too great for just a few families to undertake. We are going to need the commitment and support of our friends and families of CCA to achieve this goal. Today you have the opportunity to be part of something special, a legacy in the making for many years to come. This campaign is vital to our vision and ensures that we will promote an environment where our students will continue to excel. Join me, as well as my fellow Campaign committee members, the Board, faculty and the entire CCA family in giving sacrificially over the next 5 years to see the visions realized.

When I was asked to represent the Building on Excellence campaign, I was happy to accept. The first reason is that my three children attend CCA and are deeply engaged and thriving. CCA has truly been a blessing to our family. CCA has played a huge role in their development and in cultivating their confidence and sense of values. Representing the Campaign is a way for me to model the kind of leadership and confidence that I hope to see growing in my children—a way of showing them that when something is important in your life, it is important that you nurture it, cherish it, and give back to it.

The second and related reason I agreed to be Campaign Representative is that CCA has become part of our family. The mission of the school and its culture are ingrained in us. Building this new and bigger CCA campus is rewarding, lasting, and challenging. Yet, the future that will unfold on that newer and bigger campus in our children's lifetimes, and in their children's, is my true motivation.

No successful institution can stand still. CCA's founders didn't simply open the school doors and then sit back to admire what they had accomplished. They worked to improve and to advance the school. Today, we benefit greatly from their efforts. By launching this Campaign, transforming the campus, and enriching the education of our students, we are building on the essence of CCA. From the day the school was founded, CCA has risen through God's hand and the work of its leaders to the next level of excellence, never resting on any laurels, always striving to go above and beyond. I ask that you will please join us in support of this Campaign and above all to uphold the Campaign and CCA's future in prayer to the God who loves us and continues to bless us.



Building on Excellence

How to give...

How to give...

Calvary Christian Academy receives no provincial funding. Therefore, all capital is raised through individual or corporate contributions. Your gift will help ensure that students of Calvary Christian Academy will be the future. Each gift to the “Building on Excellence” capital campaign brings us a step closer to realizing this incredible goal of offering Christ-centered, highly academic education to our students. Your gift can make a world of difference for the lives we are impacting for now and for the future.

Already, a number of individuals have stepped forward to get us started on our journey. You too can be a part of this spiritual legacy by investing in the minds and the hearts of our students.

Gifts of cash: This is the simplest of all possible gifts. Gifts of cash by cheque or credit card can be made to Calvary Christian Academy.

Pledge and payments: Gifts do not necessarily need to be made in a lump sum. Many individuals and families have opted to structure their gifts over time. A pledge gift paid over a period of time often allows you to make a larger gift that might not otherwise be possible.

Gifts of bonds and securities: Gifts of bonds and securities offer you two tax-smart advantages – a charitable income tax deduction, and in most cases, an elimination or reduction of the capital gains tax.

Capital asset gifts: Capital asset gifts include tangible items such as real estate, insurance policies, or other tangible items of value. The tax benefits of giving any of these types of capital assets will depend on your particular circumstances.

Give a gift in kind: If you own a business or have skills that can assist CCA in the building process, you may be able to donate to CCA and possibly benefit from tax advantages through your gifts while lowering the overall building costs of our building.

The Campaign Team:

Vanessa Bernicky, Campaign Committee
Tom Bourne, Principal, Campaign Committee Chair
Keith Chapman, Campaign Committee
Joe Dow, Campaign Committee
Mark Peterkins, Campaign Committee
Kevin Wills, Treasurer Campaign
Rebecca Wissink, Campaign Committee/Representative



Building on Excellence

Building on Excellence

5 year Commitment

Gifts at all levels are important to the School

Target # of Partners	# Committed to Date		Donation Amount	Total Required	Total Pledged to Date
2	1	\$ 2,000 /month	\$ 120,000	\$ 240,000	\$120,000
2	1	\$ 1,000 /month	\$ 60, 000	\$ 120, 000	\$60,000
4		\$ 750 /month	\$ 45, 000	\$ 180, 000	
11		\$ 500 /month	\$ 30, 000	\$ 330, 000	
11		\$ 250 /month	\$ 15, 000	\$ 165, 000	
15	1	\$ 150 /month	\$ 9, 000	\$ 135, 000	\$9,000
20	5	\$ 100 /month	\$ 6, 000	\$ 120, 000	\$30,000
30	7	\$ 50 /month	\$ 3, 000	\$ 90, 000	\$21,000
30	3	\$ 30 /month	\$ 1, 800	\$ 54, 000	\$54,000
30	7	\$ 25 /month	\$ 1, 500	\$ 45, 000	\$10,500
30	4	\$ 10 /month	\$ 600	\$ 18, 000	\$2,400
184	29			\$ 1, 497, 000	\$306, 900

Monetary Gifts

Debt Forgiveness

To Date

\$44, 800

Total to date \$351, 700



Building on Excellence

Building on Excellence

Capital Campaign Giving/Gift Levels

Recognition of donors who contribute to the **Building on Excellence** Campaign is important to the School. Therefore, donors making gifts of \$1,500 or more will be recognized on a permanent display at the school. All donors will be acknowledged in campus publications and campaign reports, and honoured in the appropriate gift club or lifetime giving society.

\$ 120,000 or above	Leader
\$60,000 to \$ 119,999	Benefactor
\$ 30,000 to \$59,999	Patron
\$ 9,000 to \$29,999	Supporter
\$ 3,000 to \$ 8,999	Donor
\$ 1,500 to \$2,999	Friend

Naming Opportunities Available

There are several Capital Campaign Giving Levels and Campus Naming Opportunities available to recognize our major donors. You may choose to honour your family, friends, or others far into the future by naming one of the following on behalf of the honoree:

- Auditorium/chapel/theater - \$250,000
- Preschool - \$200,000
- Athletics Field/Track - \$250,000
- Music Room - \$50,000
- Faculty Lounge - \$50,000
- Gymnasium - \$100,000
- Resource Rooms (2) - \$50,000 each
- Classrooms (6) - \$35,000 each
- Change rooms (2) - \$25,000 each



In Summary



Thank you for your generous assistance. For further information about the Capital Campaign, or if you wish to discuss your personal donation, or ways you can contribute, or gift levels and naming opportunities please visit our website at www.calvaryca.com . You may also contact the main office at 613-283-5089 or send an email to Rebecca Wissink – Campaign Director at r.m.wissink@gmail.com or 613-983-4506 for detailed information.

The Building on Excellence Capital campaign is unprecedented in scope and importance. It is essential that we provide enough square footage and adequate facilities that will serve our students for decades to come and keep CCA appealing to new families.

The current strength and future vitality of Calvary Christian Academy rests in the hands of those who know it and love it. The generosity and caring spirit of the school's trustees, faculty, parents, and community and corporate friends will ensure this ongoing commitment to excellence continues to guide the school on a sure path.

We are deeply grateful for the many who make Calvary Christian Academy their philanthropic priority and volunteer their time and talents to help to ensure that our future remains bright.



Building on Excellence